

RECHNER SENSORS

Custom-made level control for your industry.

TiLevel

A stylized graphic of a level sensor or probe, rendered in a light blue color. It features a vertical shaft with a horizontal base and a small rectangular component at the top, all with a slight 3D effect.

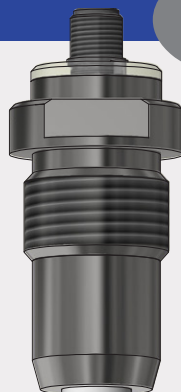
the future of automation. since 1965.

TiLevel

The Gamechanger '23.

Our optimized level probe

Probe detects materials by automatic compensation of **dielectric constant** in wide range from ϵ_r 1,5 bis 80.



Simple adjustment via

- control line or
- by magnet on teachspot

Easy Teach as digital interface

- Probes currently with analog output (U , I)
- Further digital interface possible in the future
 1. IO-Link
 2. Bluetooth

FDA
conform

PEEK
FDA 21
CFR 177.2415
conform

PTFE
FDA 21
CFR 177.1550
conform

ET
EasyTeach

ETM
EasyTeach

ETW
EasyTeach

Use
IO-Link
Universal • Smart • Easy



Continuous level measurement of **bulk solids, powders** and **liquids**

Material	ϵ_r
Coffee beans	1,5
Metal powder	6,0
Water	80

Our innovation solves your **challenge** in case of **product change** or (process-related) **change of the media properties**

There is **no need to rebalance** when **changing products**. This allows you to **focus on other things!**

Probe material: GKF, PEEK or PTFE

Probe dimensions: 100 - 2.000 mm

True to our motto

Custom-made level control for your industry
we **adapt** our probe to **your requirements**.

- **Setting with empty vessel**, i.e. **no filling material** necessary
- **No resetting** necessary
- **One setting for all media**
- **Medium-independent** measurement over the **entire probe length** possible



Family business. since 1965.

You want to learn more about us, how we live responsibility in the company?

We'll take you with us.



ClimatePartner
certified company
climate-id.com/15K5GR



CO₂
measure
reduce
contribute

RECHNER
SENSORS

© RECHNER Germany 05/2023 EN



We care.

Climate neutral. Sustainable. Recyclable. VIVUS 89!
I am made of 100% recycled paper.